

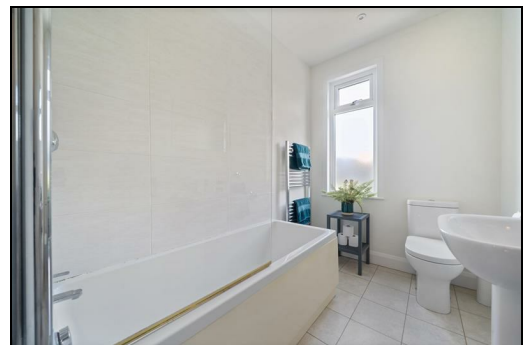
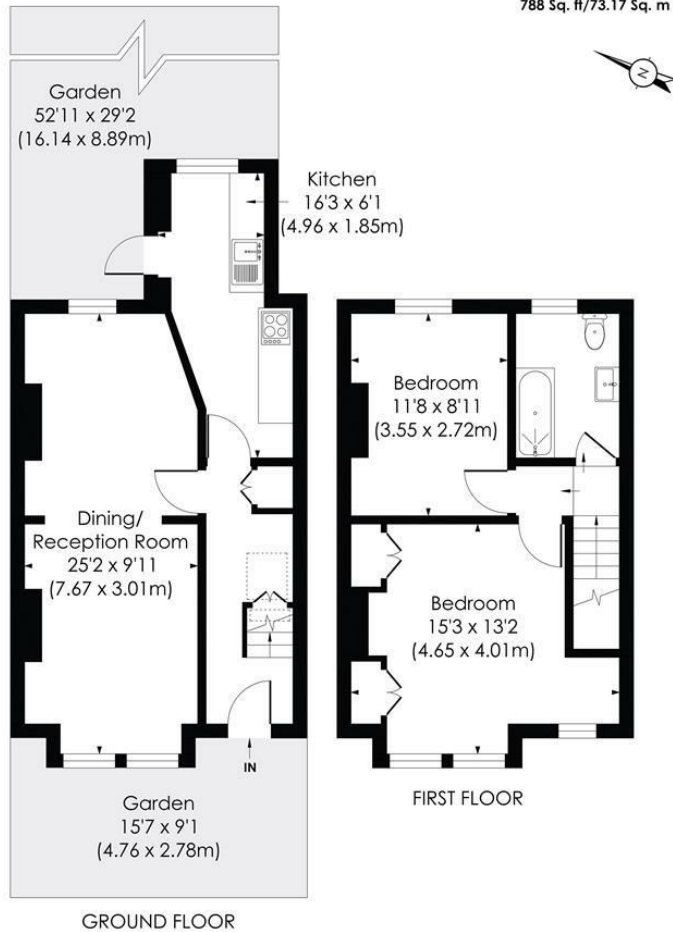
Aston Road Raynes Park, SW20 8BG

£750,000 Freehold



This attractive TWO DOUBLE BEDROOM, brick fronted Edwardian Apostle House has a lovely 52'ft garden and is located in the middle of Aston Road, only 0.2 Miles to Raynes Park High Street and Station. An excellent first/second time purchase or down size move. There is a spacious through lounge, extended kitchen, two double bedrooms and a modern family bathroom. Offering excellent potential to extend subject to the usual consents. NO ONWARD CHAIN.

ASTON ROAD, SW20
Approx. Gross Internal Floor Area
788 Sq. ft/73.17 Sq. m



Energy Efficiency Rating		Current	Potential
Very energy efficient - lower running costs			
(92 plus) A			
(81-91) B			
(69-80) C			
(55-68) D			
(39-54) E			
(21-38) F			
(1-20) G			
Not energy efficient - higher running costs			
England & Wales			
		</	

- Two Double Bedrooms And Modern Bathroom
- Brick Fronted Edwardian Apostle House
- Lovely 52ft Garden
- Only 0.2 Miles To Raynes Park Station And High Street
- Excellent Potential To Extend S.T.P.P
- Spacious Through Lounge And Extended Kitchen
- Loft Space
- No Onward Chain
- EPC Rating - C
- Council Tax Band - D

For Free Mortgage Quote and Best Mortgage Rates, call Ellisons Mortgage Advisor on 0208 944 9595



Although these particulars are believed to be correct, their accuracy is not guaranteed and they do not form part of any contract.

Celebrating 30 years of successful Sales and Lettings in Merton

